

ODOT Improves the U.S. 30 Corridor

Safety & preservation improvements coming your way!

This overview is designed to share the travel impacts and improvements coming your way. In these projects, we can look forward to increased safety and improvements to our roads, bridges and environmental impact.

US 30: connecting community & commerce

These roads carry an average of 30,000 vehicles daily and are a vital part of our transportation system. They connect communities and goods, and include the St. Johns Bridge, a historic landmark.

A \$38 million+ investment:

- Increases travel safety.
- Preserves roads and bridges.
- Builds protections for our rivers.

RECENT WORK

St. Johns Bridge Improvements

In the last five years, ODOT has invested in this 90-year-old landmark through projects that:

- Strengthened bridge framework with steel reinforcement.
- Smooth, repaired concrete on the arches to protect the steel frame (underway).

U.S. 30 NW Industrial Area Repavement Project

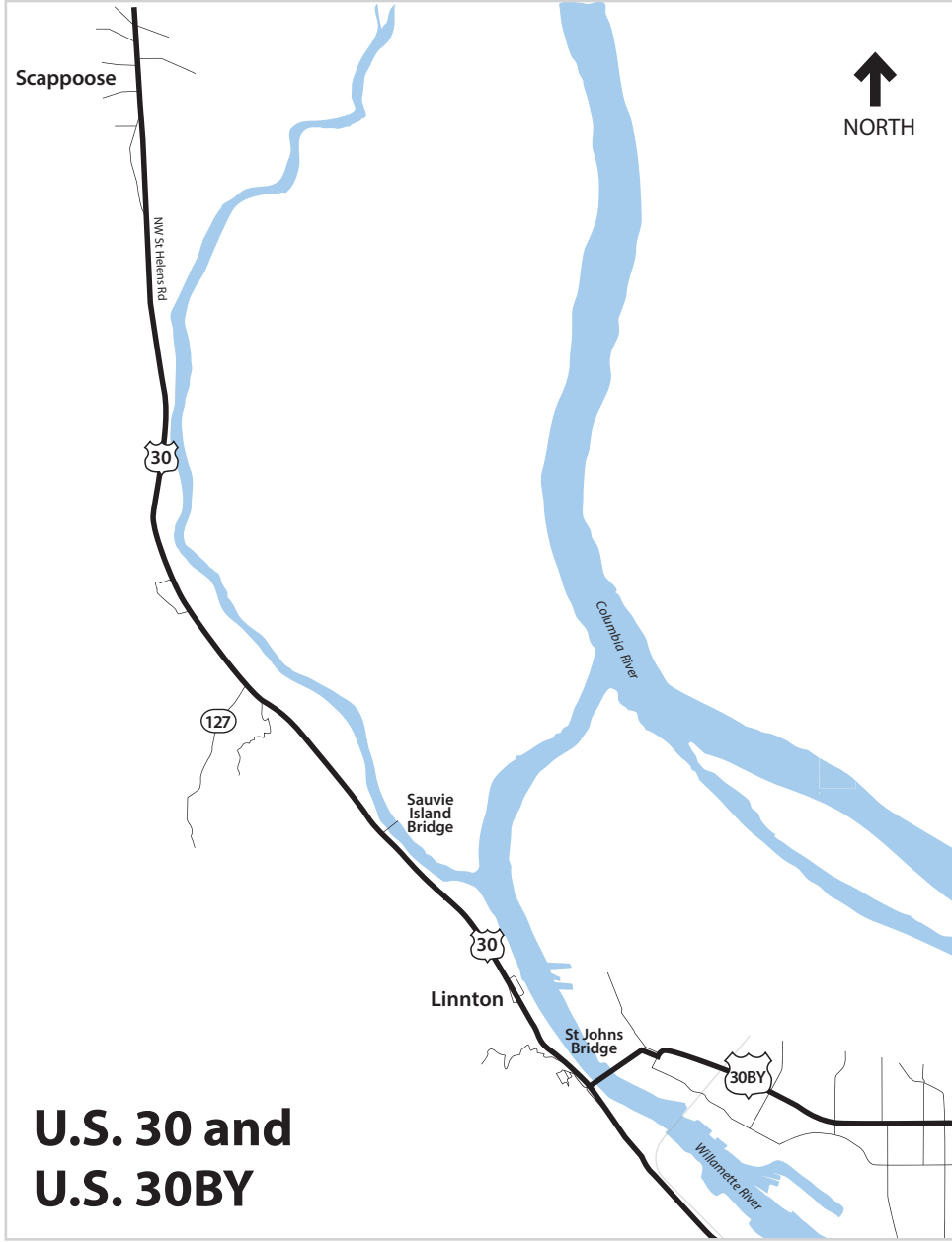
Crews have nearly completed work on U.S. 30 between NW Bridge and NW Kittridge Avenues resulting in:

- Repaved road in both directions.
- Replaced traffic signals.
- Built curb ramps that meet Americans with Disabilities Act (ADA) requirements.
- Improved bike travel by adjusting lane widths and adding a five-foot-wide buffered bike lane.

NW Bridge Ave Rockfall Response

In response to the January 5, 2022 emergency rockfall event, crews:

- Installed a new pinned mesh system on the hillside. (Pictures at right).



U.S. 30 and U.S. 30BY

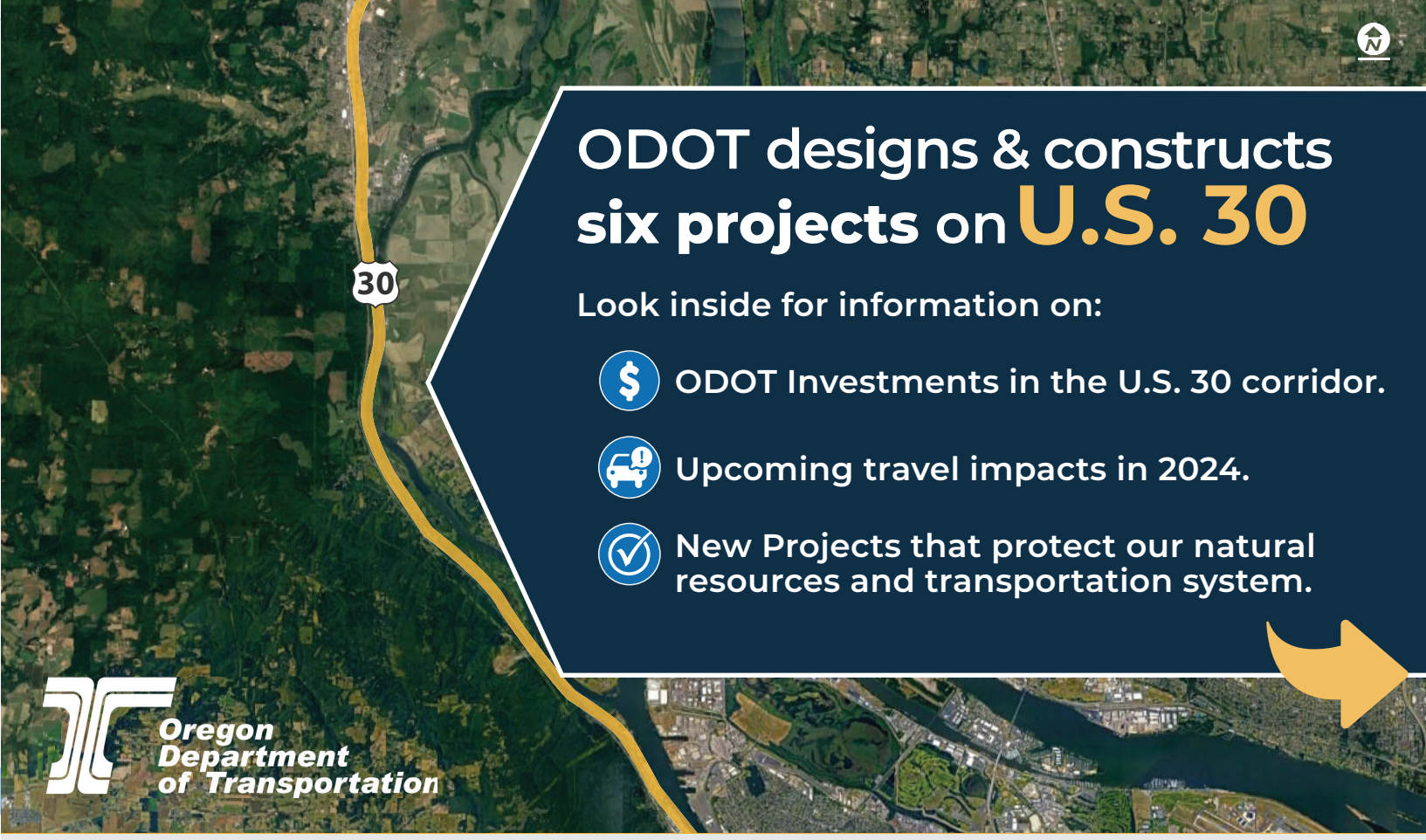
Above: A map of the U.S. 30 and U.S. 30 Byway travel corridor



Above: At left, the January 2022 landslide at NW Bridge Avenue (U.S. 30 Bypass).



At right, crews drill the last of the anchors in the pinned mesh system, April 20, 2022.



ODOT designs & constructs six projects on U.S. 30

Look inside for information on:

- ODOT Investments in the U.S. 30 corridor.
- Upcoming travel impacts in 2024.
- New Projects that protect our natural resources and transportation system.



Learn about ODOT's travel improvements and 2024 impacts!

Contact Ellen Waters,
ODOT Community Affairs
ellen.waters@odot.oregon.gov
971-336-1249

Questions or comments?

For ADA (Americans with Disabilities Act) or Civil Rights Title VI accommodations, translation/interpretation services, or more information call 503-731-4128, TTY 800-735-2900 or Oregon Relay Service 7-1-1.

Si desea obtener información sobre este proyecto traducida al español, sírvase llamar al 503-731-4128.

Если вы хотите, чтобы информация об этом проекте была переведена на русский язык, пожалуйста, звоните по телефону 503-731-4128.

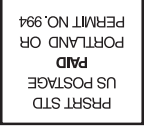
如果您想瞭解這個項目翻譯成繁體中文的相關資訊，請致電(503) 731-4128。

如果您想瞭解這個項目翻譯成簡體中文的相關信息，請致電503-731-4128。

이 프로젝트에 관한 한국어로 된 자료 신청방법 전화: 503-731-4128.

Nếu quý vị muốn thông tin về dự án này được dịch sang tiếng Việt, xin gọi 503-731-4128.

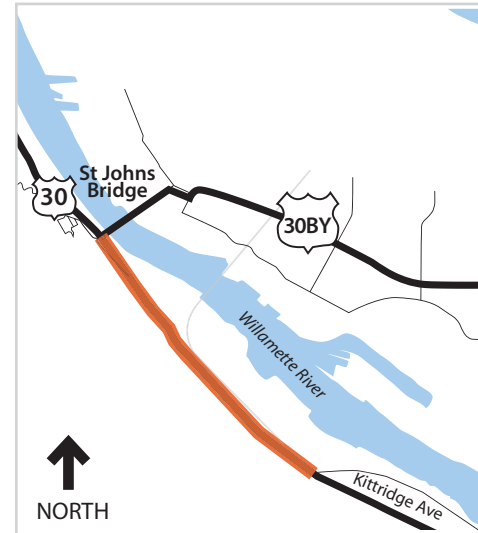
Region 1 Headquarters
123 NW Flanders St.
Portland, OR 97209



NW Industrial Area Repavement

Construction Phase

Completion 2024



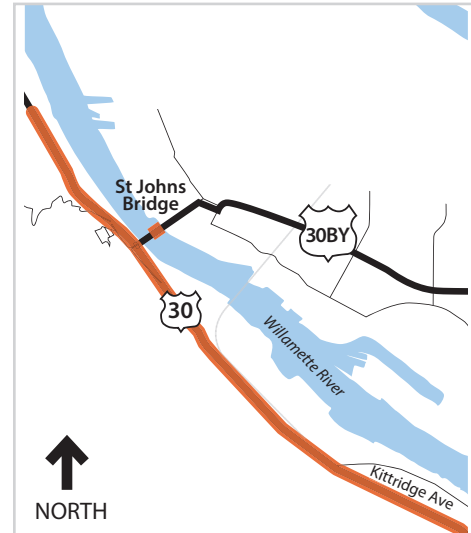
We are improving safety and repaving U.S. 30 between St. Johns Bridge and NW Kittridge Avenue southeast of the St. Johns Bridge. The project installs new signals, builds ramps that meet ADA requirements and adjusts lane widths to accommodate people biking.

What to expect: Construction activities continue through December, with up to two nights of paving in summer 2024.

Willamette River Stormwater Improvement

Design Phase

Construction expected in 2026



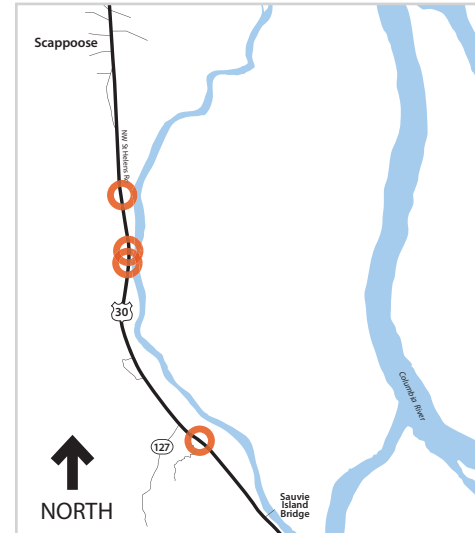
We are designing 26 stormwater treatment facilities near three highways in Portland to protect fish, wildlife, water quality and public health. These facilities filter water runoff and reduce pollutants from entering the Willamette River using our current stormwater system.

What to expect: Project design through 2025, and construction expected in 2026.

Culvert Rehabilitation

Design Phase

Construction expected in 2025



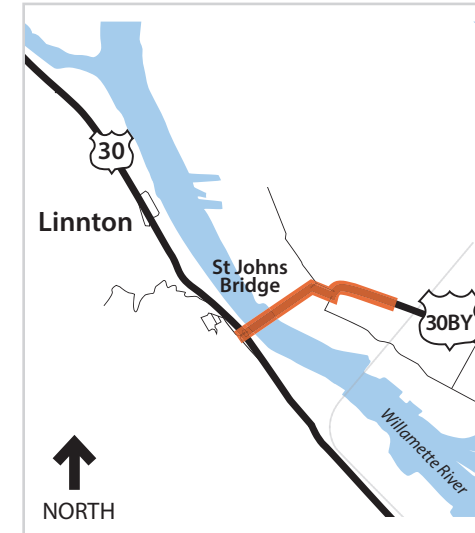
We are designing repair work to strengthen and lengthen the life of four culverts under U.S. 30 between NW Portland and Scappoose.

What to expect: Our team is assessing the needs of each culvert and designing solutions to improve them. Construction planned for 2025.

St. Johns Bridge Repair

Construction Phase

Completion 2025



We are improving the long-term safety and lifespan of the St. Johns Bridge by repairing the concrete on the pier columns and arches under the bridge. Repairing the concrete will protect the bridge's steel internal frame and reinforcements from corrosion, maintaining the service life of this beloved historic Landmark.

What to expect: Crews continue work to repair the columns through June 2025. No impacts to vehicles.

NW Bridge Ave SE Ramp: Rockfall Mitigation Project

Construction Phase

Completion 2024



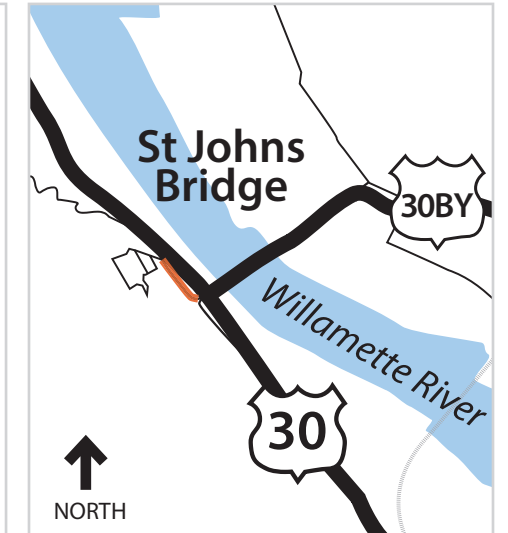
We are improving safety and preventing rockfall on NW Bridge Avenue (U.S. 30 Bypass) southwest of the St. Johns Bridge. The project removes hazardous vegetation and loose rock, and installs pinned mesh to prevent future rockfall.

What to expect: Heavy traffic is expected from January to July 2024 on U.S. 30 and U.S. 30 Bypass (N Lombard Street) with full, around-the-clock closures of the southeast ramp of NW Bridge Ave.

NW Bridge Ave NW Ramp: Preservation

Design Phase

Design expected 2024



We are preserving NW Bridge Avenue northwest of the St. Johns Bridge by strengthening the concrete supports under the bridge and restoring the road surface. These improvements will extend the service life of the structure.

What to expect: Project design is scheduled to begin in 2024.



An aerial shot of U.S. 30 during construction.



Learn more at: bit.ly/NWIndustrialAreaRepavement



Crews onsite at the east end of the Fremont Bridge discussing design.



Learn more at: bit.ly/ODOTstormwaterimprovement



Crews guide camera into culvert to assess conditions.



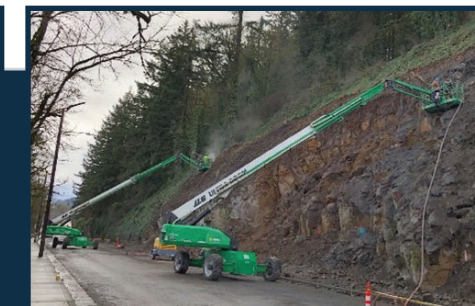
Learn more at: bit.ly/us30culverts



A column wrapped during construction under the St. Johns Bridge.



Learn more at: bit.ly/stjohnsbridgerepair



Part of the pinned mesh system being installed on the hillside by NW Bridge Avenue in 2022.



Learn more at: bit.ly/bridgeavenue



The supports under NW Bridge Avenue will be strengthened.



Learn more at: bit.ly/bridgeavenuenw